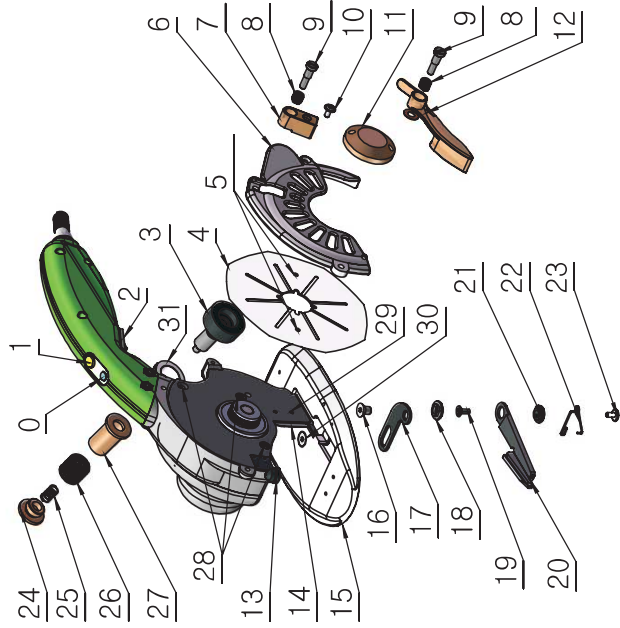


PARTS ASSEMBLY DRAWING



NO.	PART NAME	NO.	PART NAME	NO.	PART NAME
0	Power Light	11	The blade pressure plate	22	Under Knife Spring
1	Speed/the Indicating Lamp Switch	12	The knife guard device	23	Under Knife Spring Nut
2	Enable Switch	13	LED light	24	Wheel Cap
3	Grinding Wheel	14	Separator	25	Inner Sharpener Spring
4	Knife	15	Chassis	26	Wheel Pressure Spring
5	Location Hole	16	Under knife Fastening screw	27	Wheel Spindle Sleeve
6	Shield	17	Under knife connection	28	Bracket Screw
7	Oil Pot	18	Two steps nut	29	Separator Screw
8	Pressure Spring	19	Cross big pan screw	30	Chassis Screw
9	Step Screw	20	Under knife	31	Shapener Frame
10	Cover Screw	21	Three steps screw		

DIRECT DRIVE SERVO CUTTING MACHINE GUARANTEE CARD

CUSTOMER NAME	
ADDSS	
PRODUCT TYPE	
SERIAL NUMBER	
MARKETING UNIT	
FAULT DESCRIPTION	
DATE OF MANUFACTURE	
DATE OF PURCHASE	

Warranty terms

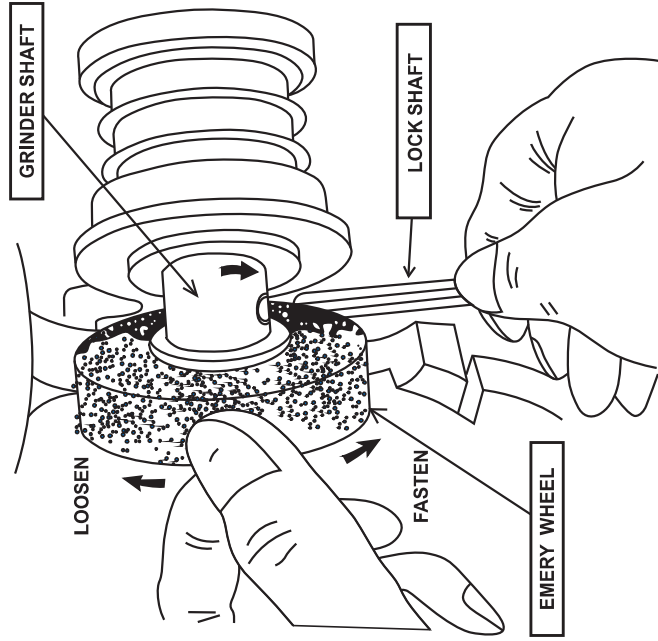
一、The purchase of this product, please carefully fill in this card, read the following warranty terms carefully, to ensure the products effectively warranty.

- 1.This product from sale date of the warranty period of one year, during the warranty period as a product failure, the company provides free repair or replacement of parts.
- 2.The warranty is required to provide the warranty card.
- 3.The warranty card to fill in the information must be true, otherwise invalid.
- 4.After repair, such as quality problems three months because of the occurrence of same fittings damage or fault free repair.

二、The following will implement the paid service repair.

- 1.The product is not in the warranty period or can't produce not effect the warranty card.
- 2.Due to a malfunction or damage to natural disasters, irresistible factors, abnormal voltage caused by.
- 3.Failure or damage due to transportation, improper storage.
- 4.The fault caused by the use of "not written according to product manual" on the instructions or note operation.
- 5.Fault without the authorization of the product disassembly, repair, alteration caused by the.
- 6.Blade, grinding wheel and other consumables required to buy separately.

GRINDING WHEEL REPLACEMENT GUIDE



用手握住砂轮外圆，将插销塞进砂轮轴上的孔，然后按箭头所示的方向旋转，松开旧的砂轮换上新的砂轮。

Hold the grinding wheel by hand. Insert the attached lock shaft to the hole provided in grinder shaft and turn to arrow indication. Remove used wheel and replace with new.

Using Instruction

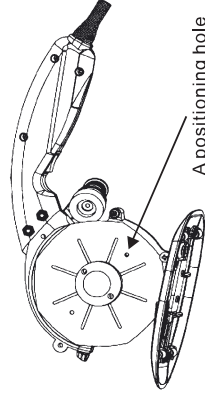
- 1.Startup: switch on power, power lights(red)on, turn on the switch, machine works.
- 2.Adjust speed: short press speed controller: circulate speed from 600-1200rpm/min:
- 3.Lights : long press (aroud 3 seconds)speed controller,LED light on, long press again, LED off, circulate speed.

Change Knife

The use of disposable blade cutting machine. Each blade has 8 shear, shearmouth long after cutting, the cutting performance will decline. When the sheardifficulties, please replace the blade.

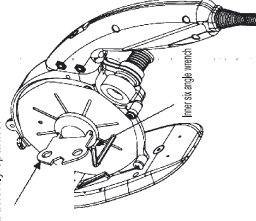
Blade replacement illustration:

The first step: remove the shield, knife guard device, lubricating oil, remove theafter effects are as follows.

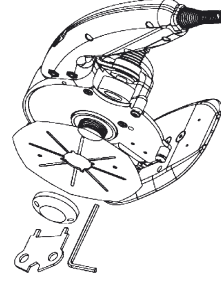


The second step: Annex M3 inner six angle wrench into the blade and a supportsheet metal, accessory butterfly wrench counterclockwise unscrew the bladepressure plate, remove the blade.

The butterfly spanner



The third step: a new blade, the replacement is completed by removing insteadstep back parts.



Product Standard

MODEL	RCS-100	RCS-110	RCS-125
KNIFE SIZE	100mm	110mm	125mm
KNIFE SHAPE	OCTAGON	OCTAGON	OCTAGON
WORKING VOLTAGE	110V ~ 240V	110V ~ 240V	110V ~ 240V
OPERATING POWER	3.6W ~ 200W	3.6W ~ 250W	3.6W ~ 300W
WORKING NOISE	<55dB	<55dB	<55dB
CUTTING HEIGHT	≤27mm	≤32mm	≤39.5mm
MACHINE WEIGHT	1.3KG	1.35KG	1.5KG
WORKING SPEED	600~1200RPM	600~1200RPM	600~1200RPM
WORKING LIGHTS	LED	LED	LED

Inspection and Maintenance

1. Inspecting the blade:

Using a worn or chipped blade will put an excessive burden on the motor and affect work performance. Therefore, always use a well-cutting blade.

A. Greasing: Every 50 hours, open the cap for grease cup and give small quantity lubricating oil thru oil pot.

B. Sharpening: Please sharpen knife when it's blunt.

a: Start cutting machine, make it operate under lowest speed (600/ rpm)

b. Use index finger gently lateral pressure grinding wheel cap. to let the grinding wheel and blade slightly contact friction, let the grinding wheel rotation 2 ~ 3 seconds slowly, it's finished.

C. Replacement of Grinding Wheel (See Grinding Wheel Replacement Guide)

D. Replacement of Knife (See Knife Replacement Guide)

2. Inspecting the mounting screws:

Regularly inspect all mounting screws and ensure that they are properly tightened.

Should any of the screws be loose, retighten them immediately. Failure to do so could result in serious hazard.

A. Housing loosen handle: When cutting machine is in use process, if appear housing loose condition, tighten 2 pieces M5 sunk screw of aluminum base plate

B. Lower blade loosen handle: When cutting machine is in use process, if appear lower blade loose condition, tighten the aluminum base plate fixed lower blade sunk screw, or adjust the lower blade with the included angle of round blade face, or adjust the lower blade spring and fastening screw according to demand

3. Maintenance of the motor

The motor unit winding is the very "heart" of the power tool. Exercise due care to ensure the winding does not become damaged and/or wet with oil or water.

4. Modifications:

The products are constantly being improved and modified to incorporate the latest technological advancements. Accordingly, some parts may be changed without prior notice. Due to continuing program of research and development, the specifications herein are subject to change without prior notice.

Parts List:

1. Standby knife 1 piece;
2. Standby wheel 1piece;
3. Knife lube oil 1pot;
4. Special spanner 1piece;
5. M3 inner hexagon spanner 1piece;
4. Certification 1set
5. Instruction 1set

Note:

Warning! When using cutting machine, in order to prevent fire, electric shock and injury, must abide by the basic precautions, and the matters needing attention.

Safety operation notice

1 Work places should be clean, cleared, be may lead to accident.

2 To ensure the proper working environment. Cutting machine can not be allowed to expose to wind and rain. Not moist places in operation.

3 Do not allow children and the infirm to close to the workplace. Blade incision is very sharp, please don't touch. All visitors must keep a safe distance from the work area.

4 Properly stored without the use of tools. Cutting machine will not use the store to the children and the infirm to reach places.

Before 5 the use of cutting machine, check each part and the protection device is not damaged, in order to decide whether the normal work, can play a normal efficiency.

6 May not hard to push hard. Cutting machine according to the design criteria to be effective and safe job, never reluctant.

7 Work wear suitable operator. Don't let loose clothing and metal in a rotating part.

Don't mention 8 wire cutting machine, will not pull the cable plug from the power socket demolition. Wire to separated from the heat source and the oil, and avoid contact with sharp edges.

9 Do not shear hardness more than cutting machine cutting capability objects. Otherwise, will lead to premature damage of electric scissors.

10 Before the repair and replacement blade, must cut off the power supply. And wait for the charging capacitor discharge end (red power indicator lights) after.

11 Keep on the alert, fully grasp the situation, to engage in work in the normal sense. No fatigue operation.

12 Tools should be maintained properly, maintain a sharp, clean edges to give full play to the performance. According to the prescribed grease, replacing accessories. The cable should be checked regularly, such as found in injury service unit shall entrust a professional to repair.

13 The tool must be entrusted to qualified repair personnel to repair. The cutting machine can satisfy the requirements for safety related. Repair a professional must use pure accessories to.